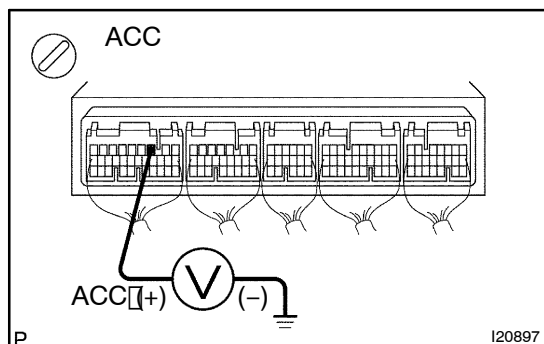


INSPECTION PROCEDURE

1 Check voltage between terminals ACC and GND of A/C ECU connector.

**PREPARATION:**

Remove A/C ECU with connectors still connected.

CHECK:

- (a) Turn ignition switch to ACC.
- (b) Measure voltage between terminals ACC and GND of A/C ECU.

OK:

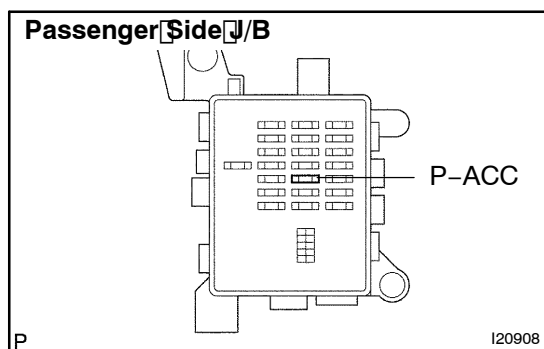
Voltage: Battery voltage

OK

Proceed to next circuit inspection shown on problem symptoms table (See page DI-1772).

NG

2 Check P-ACC fuse.

**PREPARATION:**

Remove P-ACC fuse from passenger side J/B.

CHECK:

Check continuity of P-ACC fuse.

OK:

Continuity exists.

NG

Check for short in all the harness and components connected to the P-ACC fuse (See attached wiring diagram).

OK

Check and repair harness and connector between A/C ECU and battery.