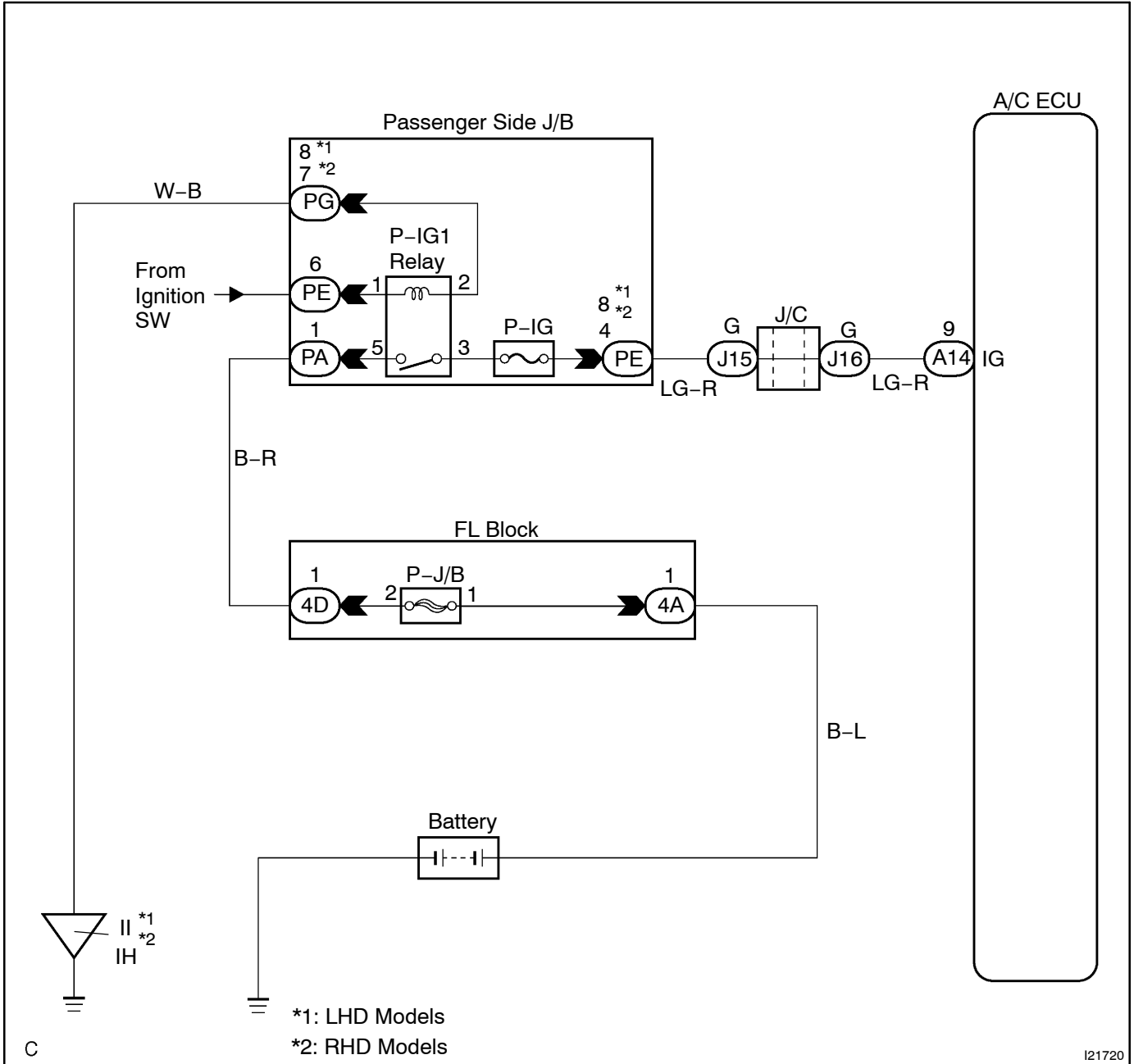


# IG Power Source Circuit

## CIRCUIT DESCRIPTION

This is the power source for the A/C ECU and servomotors, etc.

## WIRING DIAGRAM

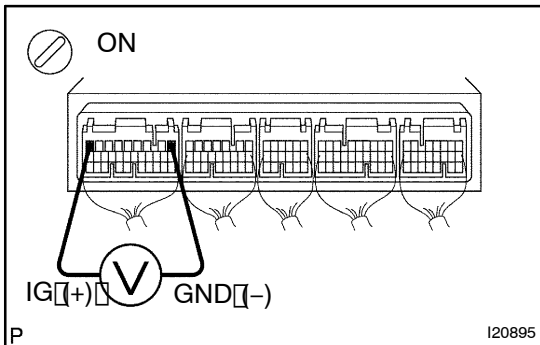


C

I21720

## INSPECTION PROCEDURE

## 1 Check voltage between terminal IG and GND of A/C ECU connector.

**PREPARATION:**

Remove the A/C ECU with connectors still connected.

**CHECK:**

- (a) Turn ignition switch to ON.
- (b) Measure voltage between terminals IG and GND of A/C ECU.

**OK:**

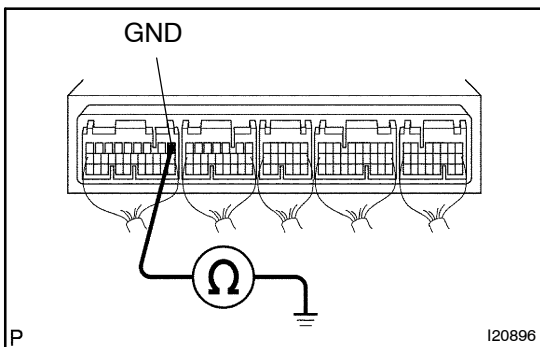
Voltage: Battery voltage

OK

Proceed to next circuit inspection shown on problem symptoms table (See page DI-1772).

NG

## 2 Check continuity between terminal GND of A/C ECU and body ground.

**CHECK:**

Measure resistance between terminal GND of A/C ECU and body ground.

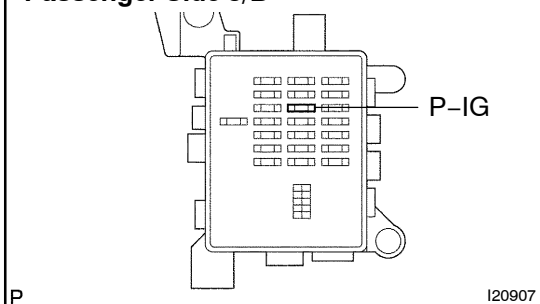
**OK:**

Resistance: 0  $\Omega$  (continuity)

NG

Repair or replace harness or connector.

OK

**3 Check P-IG fuse.****Passenger Side J/B****PREPARATION:**

Remove P-IG fuse from passenger side J/B.

**CHECK:**

Check continuity of P-IG fuse.

**OK:**

**Continuity exists**

**NG**

**Check for short in all the harness and components connected to the P-IG fuse.**

**OK**

**Check and repair harness and connector between A/C ECU and battery.**