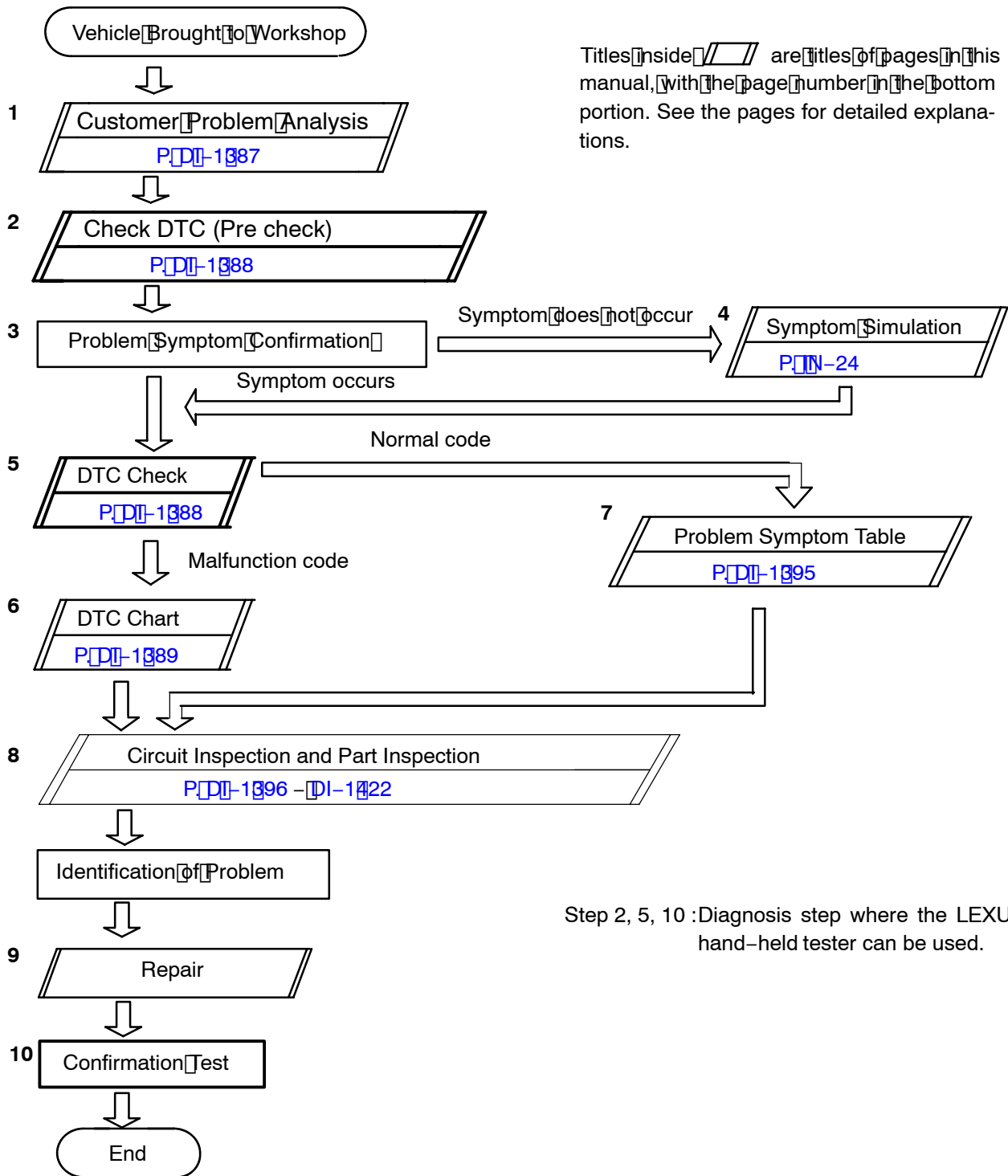


REAR RIGHT DOOR CONTROL SYSTEM

HOW TO PROCEED WITH TROUBLESHOOTING

HINT:

The ECU is connected to the multiplex communication system. Therefore, be sure to check that there is no troubles in the the gateway system before performing the troubleshooting.



Titles inside // are titles of pages in this manual, with the page number in the bottom portion. See the pages for detailed explanations.

Step 2, 5, 10 :Diagnosis step where the LEXUS hand-held tester can be used.