

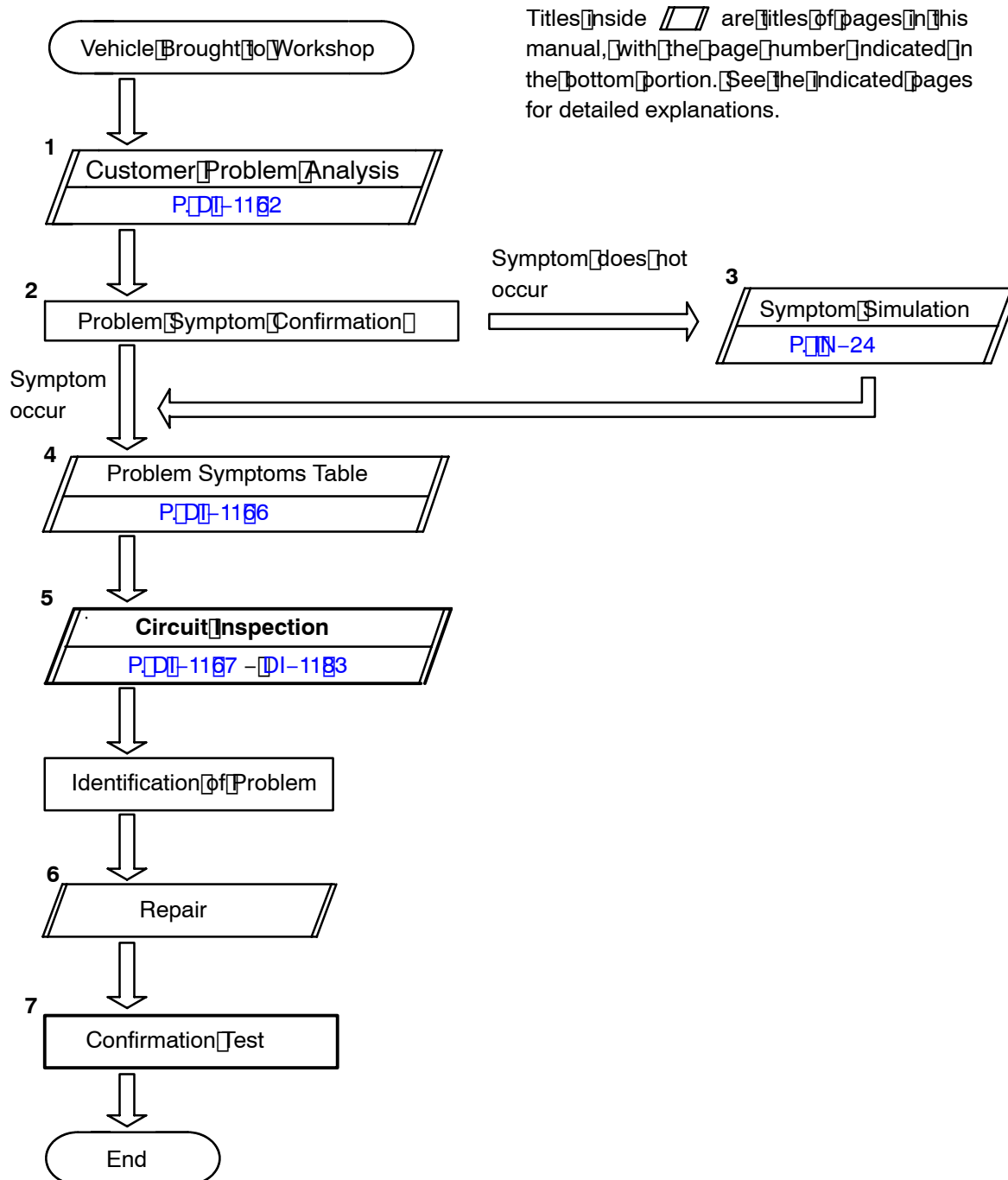
FRONT LIGHT (BODY NO.5) CONTROL SYSTEM

HOW TO PROCEED WITH TROUBLESHOOTING

D18MG-01

HINT:

This ECU is connected to the multiplex communication system. Therefore, be sure to check that there is no troubles in the multiplex communication system before performing the troubleshooting.



Step 5, 7 : Diagnostic steps permitting the use of the LEXUS hand-held tester.