

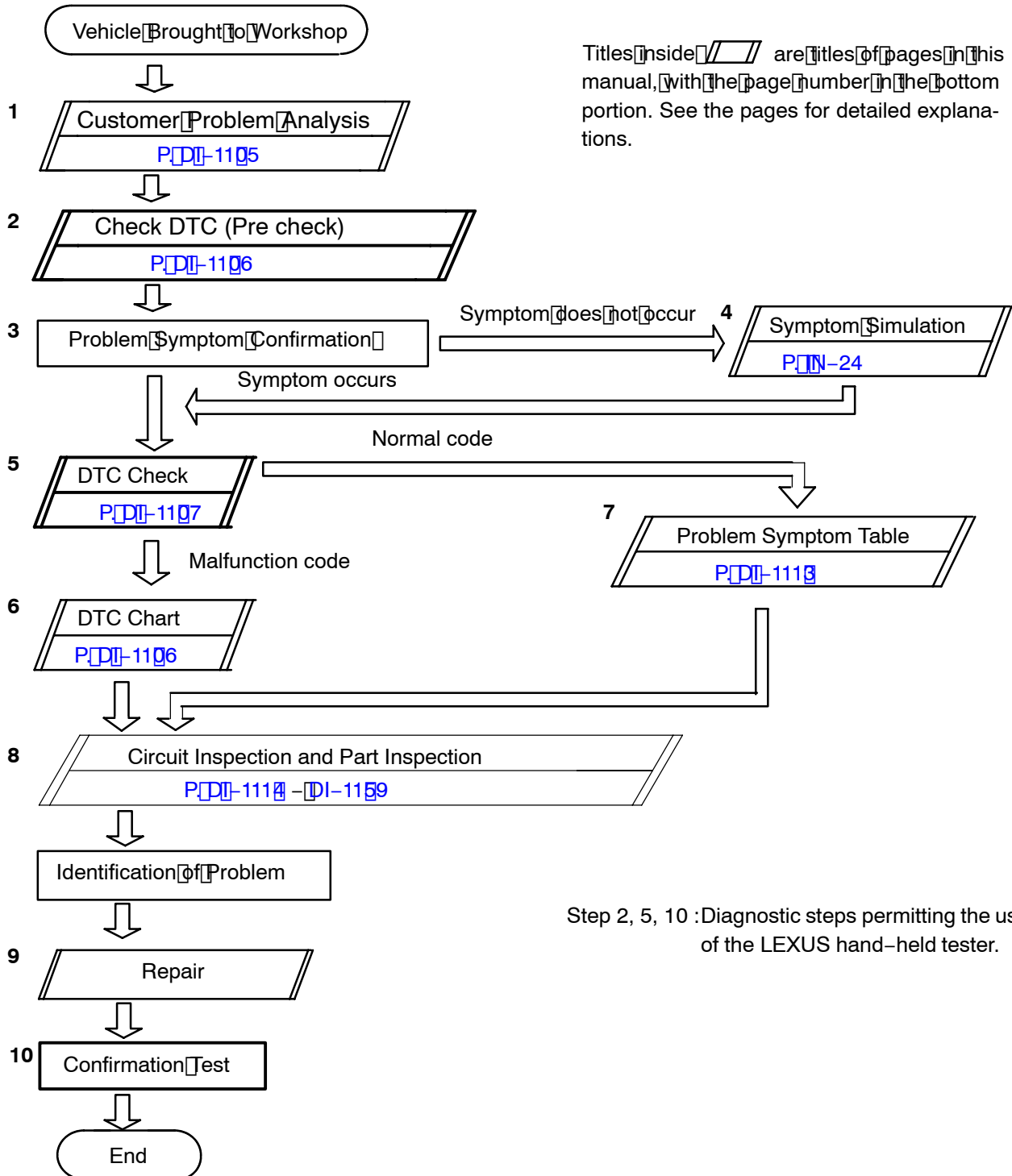
LUGGAGE ROOM JUNCTION BLOCK (BODY NO.4) CONTROL SYSTEM

DI8VO-01

HOW TO PROCEED WITH TROUBLESHOOTING

HINT:

The ECU is connected to the multiplex communication system. Therefore, be sure to check that there is no troubles in the the multiplex communication system before performing the troubleshooting.



Titles inside // are titles of pages in this manual, with the page number in the bottom portion. See the pages for detailed explanations.

Step 2, 5, 10 :Diagnostic steps permitting the use of the LEXUS hand-held tester.