

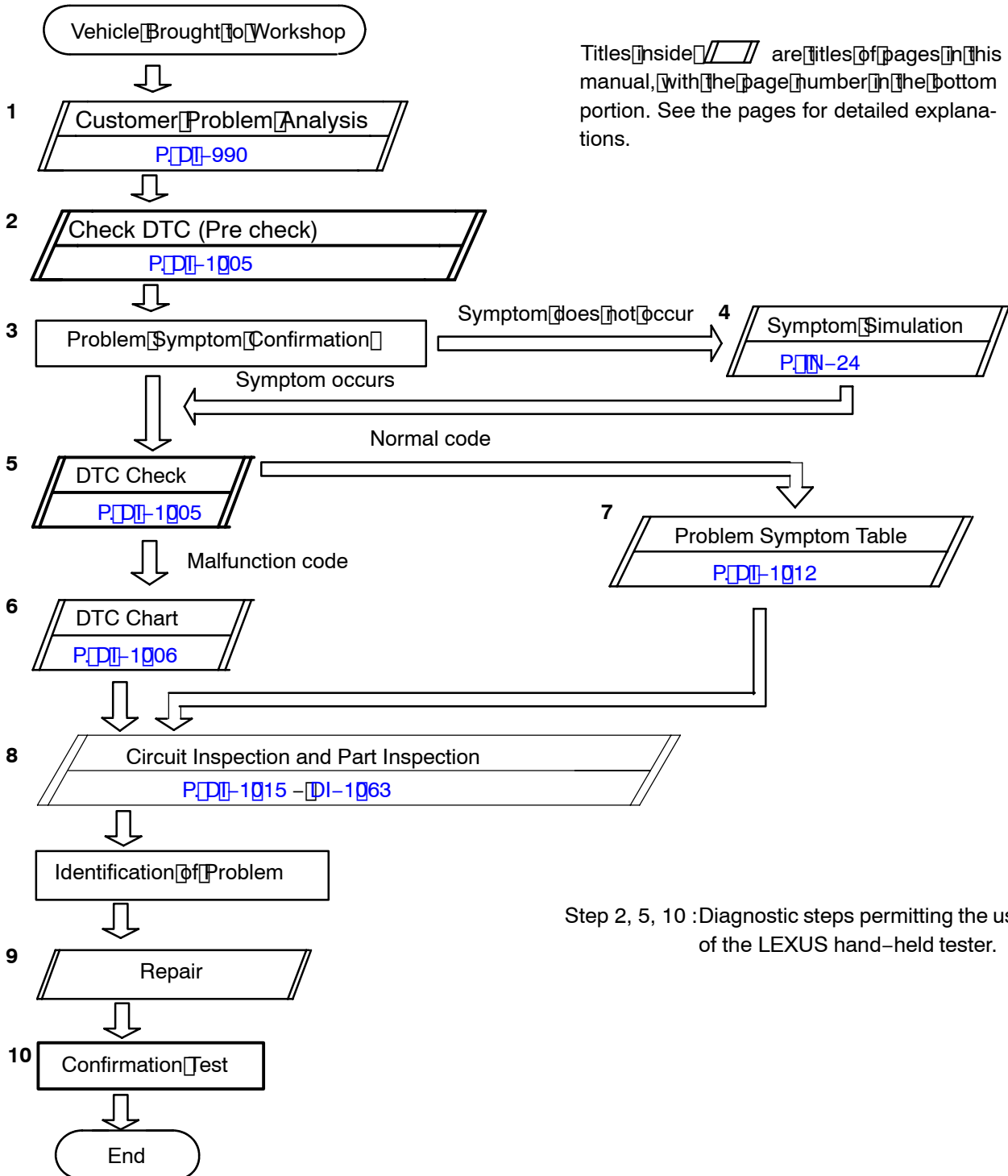
DRIVE SIDE JUNCTION BLOCK (BODY NO.2) CONTROL SYSTEM

HOW TO PROCEED WITH TROUBLESHOOTING

DI8JH-01

HINT:

The ECU is connected to the multiplex communication system. Therefore, be sure to check that there is no troubles in the multiplex communication system before performing the troubleshooting.



Titles inside // are titles of pages in this manual, with the page number in the bottom portion. See the pages for detailed explanations.

Step 2, 5, 10 : Diagnostic steps permitting the use of the LEXUS hand-held tester.