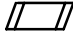


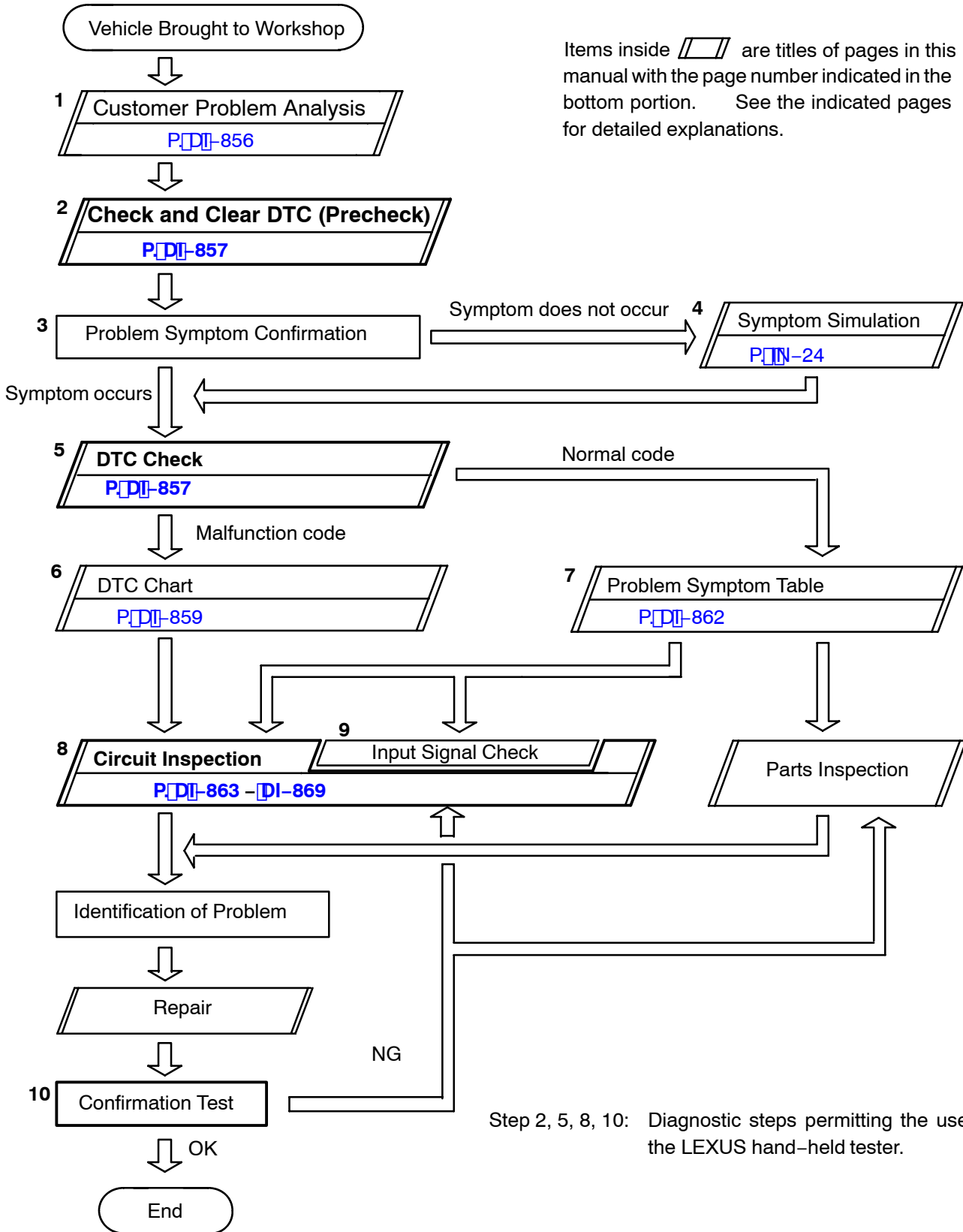
# CRUISE CONTROL SYSTEM

## HOW TO PROCEED WITH TROUBLESHOOTING

DI26R-22

Troubleshoot in accordance with the procedure on the following page.

Items inside  are titles of pages in this manual with the page number indicated in the bottom portion. See the indicated pages for detailed explanations.



Step 2, 5, 8, 10: Diagnostic steps permitting the use of the LEXUS hand-held tester.