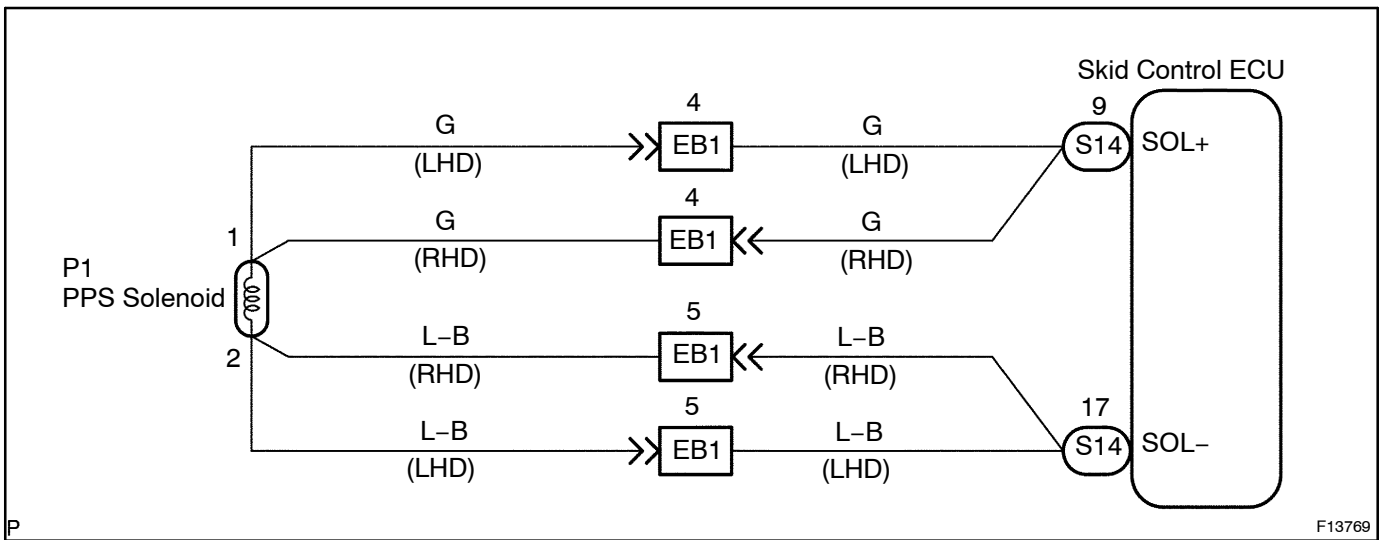


DTC	C1560, C1561	PPS Solenoid Circuit
------------	---------------------	-----------------------------

CIRCUIT DESCRIPTION

DTC No.	DTC Detecting Condition	Trouble Area
C1560	When IG1 terminal voltage is 12.5 V or more, open circuit is detected.	<ul style="list-style-type: none"> • PPS solenoid • PPS solenoid circuit
C1561	Detection of either condition 1. or 2.: 1. Solenoid (+) malfunction is detected. 2. The condition that IG1 terminal voltage is 11.0 V or more, the commanded electric current is 0.7 A or more and the monitor electric current is 0.15 A or less continues for 2 sec. or more.	

WIRING DIAGRAM



P

F13769

INSPECTION PROCEDURE

HINT:

Start the inspection from step 1 in case of using the hand-held tester and start from step 2 in case of not using the hand-held tester.

1	Check PPS solenoid operation.
----------	--------------------------------------

PREPARATION:

- (a) Connect the hand-held tester to the DLC3.
- (b) Start the engine and turn the hand-held tester main switch ON.
- (c) Select the ACTIVE TEST mode on the hand-held tester.

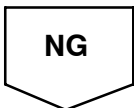
CHECK:

Check the steering operation when PPS solenoid is operated with the hand-held tester.

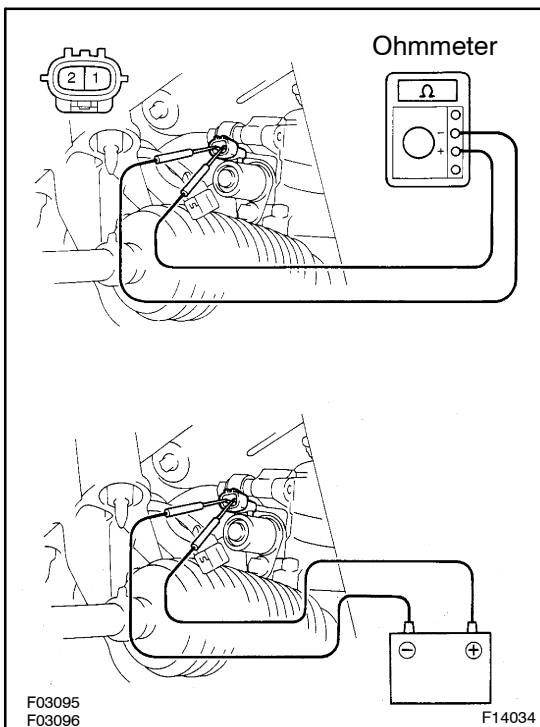
OK:

PPS solenoid OFF: Steering becomes light.

PPS solenoid ON: Steering becomes heavy.



2	Check PPS solenoid.
----------	----------------------------



PREPARATION:

Turn the ignition switch OFF and disconnect the PPS solenoid connector.

CHECK:

Measure the resistance between the terminals of the solenoid 1 and 2.

OK:

Resistance: 6 – 11 Ω

PREPARATION:

Connect the battery positive terminal to the solenoid terminal 1 and negative terminal to the terminal 2.

CHECK:

Check that the solenoid makes a "click" sound.

HINT:

- Do not apply voltage for more than 30 sec. to avoid burn-out of out the solenoid.
- If repeating this step, wait until the solenoid cools down enough that it can be touched by hand.

NG

Replace PPS solenoid.

OK

3 Check for open and short circuit in harness and connector between PPS solenoid and skid control ECU (See page N-35).

NG

Repair or replace harness or connector.

OK

Check and replace skid control ECU.