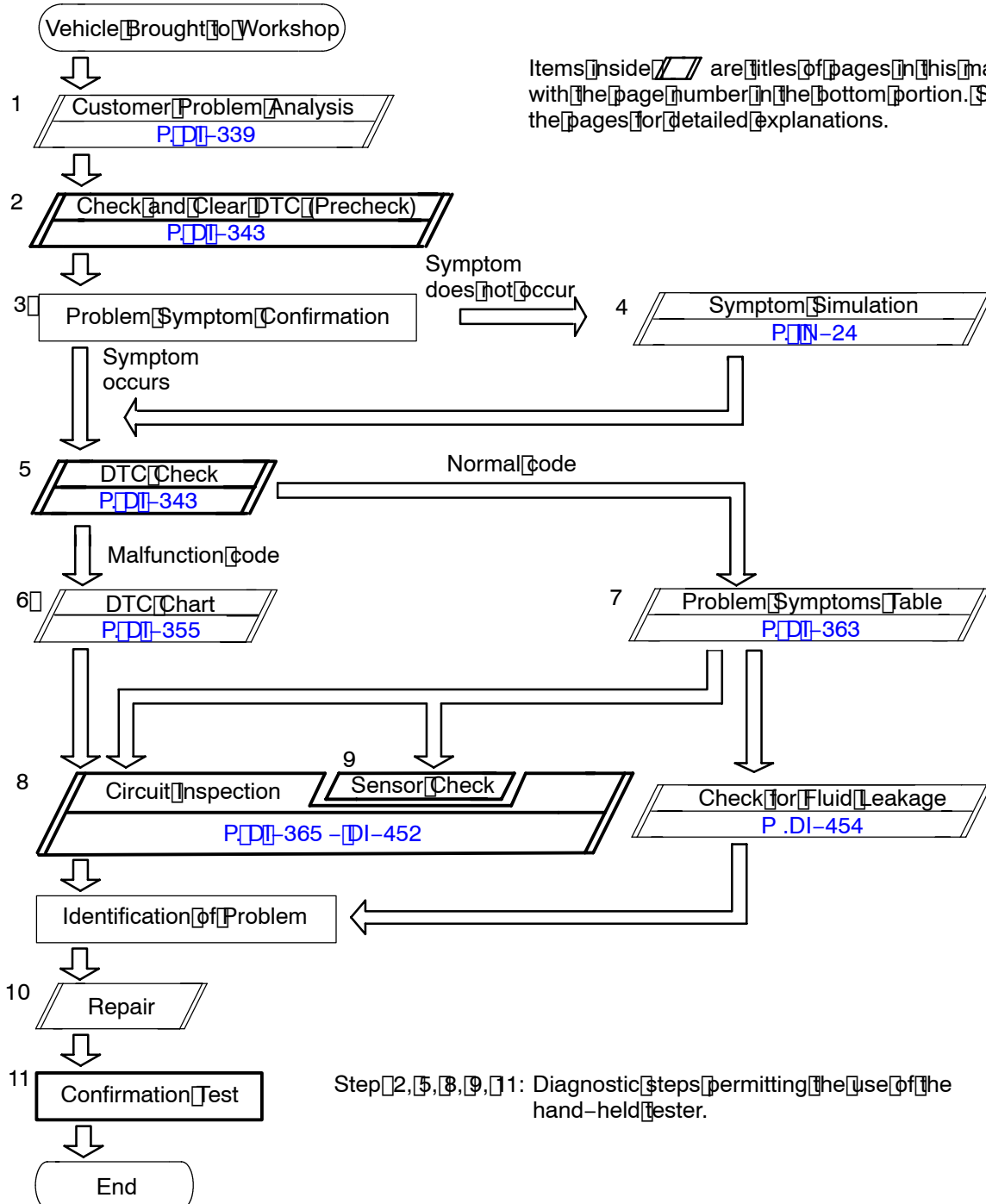


ABS WITH EBD & BA & TRC & VSC SYSTEM AND PROGRESSIVE POWER STEERING

HOW TO PROCEED WITH TROUBLESHOOTING

DI1GR-06

Troubleshooting in accordance with the procedure on the following pages.



Fail-safe function:

ABS WITH EBD & BA & TRC & VSC SYSTEM:

When a failure occurs in the ABS & BA & TRC & VSC systems, the ABS warning light and VSC OFF indicator light are lit and the ABS & BA & TRC & VSC operations are prohibited. In addition to this, when the failure that disables the EBD operation occurs, the brake warning light is lit as well and the EBD operation is prohibited.

PROGRESSIVE POWER STEERING:

When the circuit PPS solenoid circuit is faulty, efficiency of the power-assisted operation is lowered and the steering operation becomes constantly heavy.