


AUTOMATIC TRANSMISSION

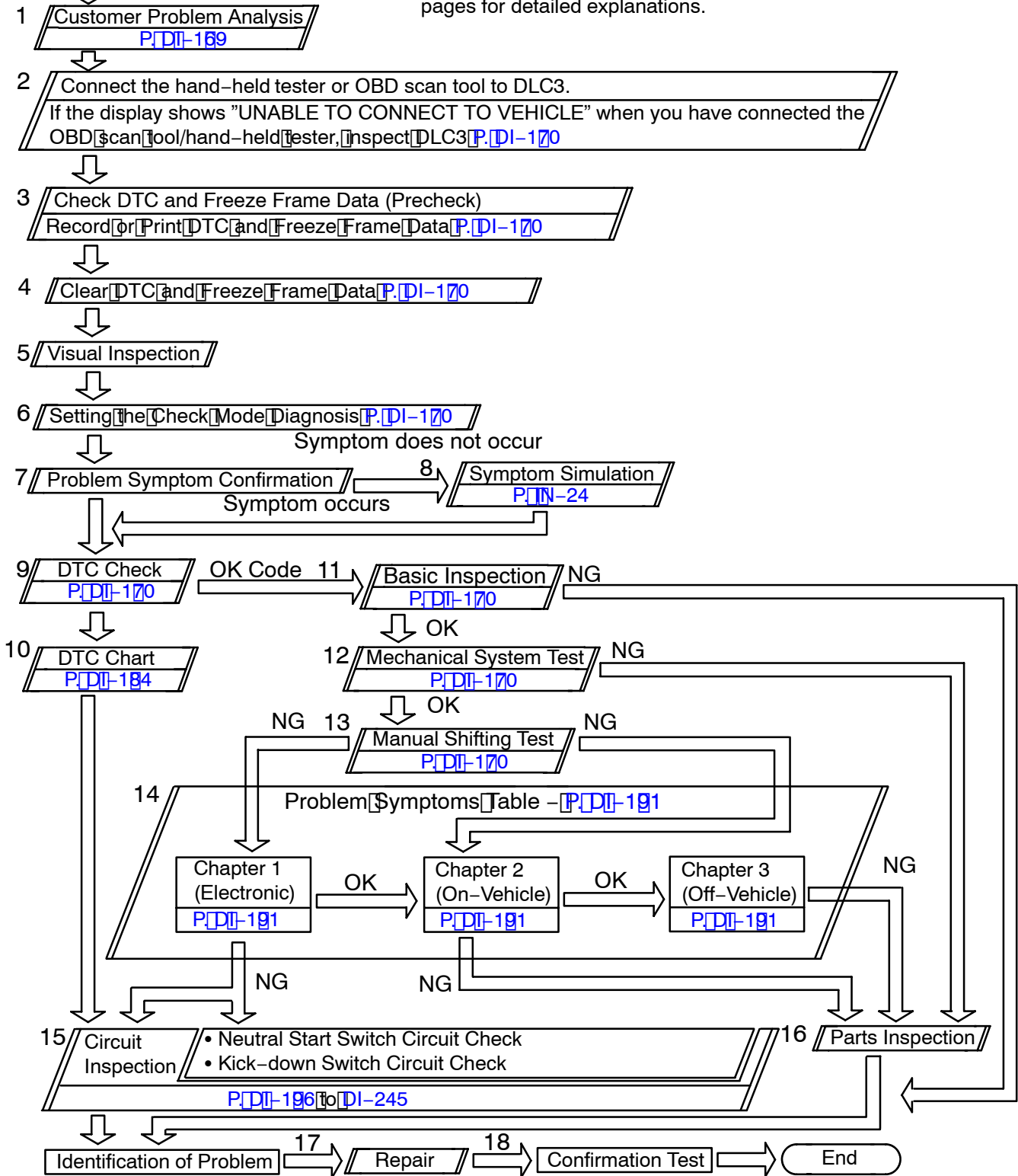
HOW TO PROCEED WITH TROUBLESHOOTING

DI67U-02

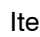
When using hand-held tester, troubleshoot in accordance with the procedure on the following pages.

Vehicle Brought to Workshop

Items inside  are titles of pages in this manual, with the page number indicated in the bottom portion. See the indicated pages for detailed explanations.



When not using hand-held tester, troubleshoot in accordance with the procedure on the following pages.

Items inside  are titles of pages in this manual, with the page number indicated in the bottom portion. See the indicated pages for detailed explanations.

