

### 8. Precaution for Pre-crash Safety System Operation

- When the millimeter wave radar sensor detects an object in front under the conditions described below, the distance control ECU may determine that a collision is unavoidable, and operate the pre-crash safety system. However, this is not abnormal.

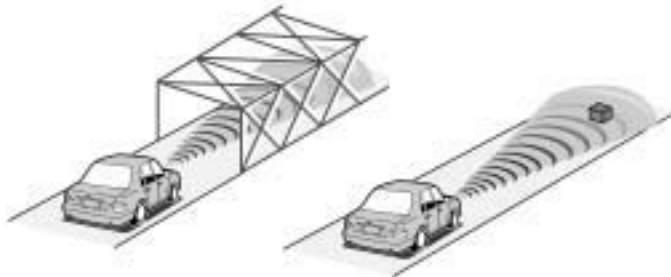
**Object on road surface at corner entrance  
(Guard Rail, Street Light, Sign, Signboard)**



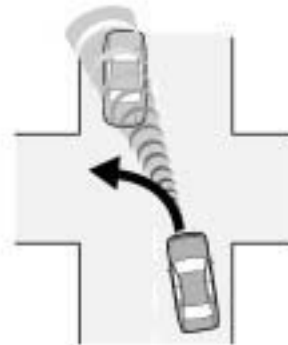
**Opposing traffic vehicle during cornering**



**Narrow Iron Bridge**



**Opposing traffic vehicle at intersection**



**Metal object, steel plate, or bump on road surface**

269LS116

- The millimeter wave radar sensor might not be able to detect the following objects as collision objects:

Objects that cannot be detected	Plastic items (Safety Cones, etc.), etc.
Objects that cannot be detected in a stable manner	People, Bicycles, Motorcycles, Trees, Animals, Snow Fence, etc.