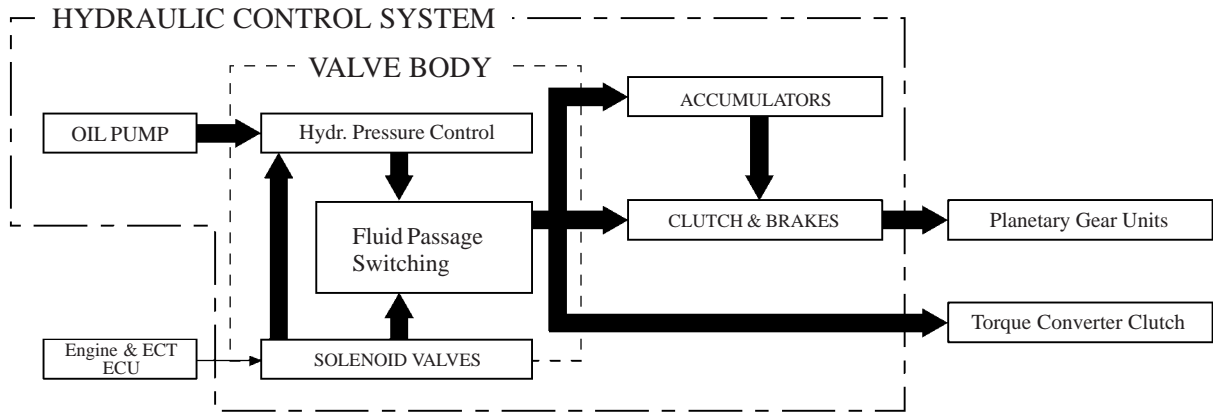


## ■ HYDRAULIC CONTROL SYSTEM

### 1. General

The hydraulic control system is composed of the oil pump, the valve body, the solenoid valves, the accumulators, the clutches and brakes as well as the fluid passages which connect all of these components. Based on the hydraulic pressure created by the oil pump, the hydraulic control system governs the hydraulic pressure acting on the torque converter clutch, clutches and brakes in accordance with the vehicle driving conditions.

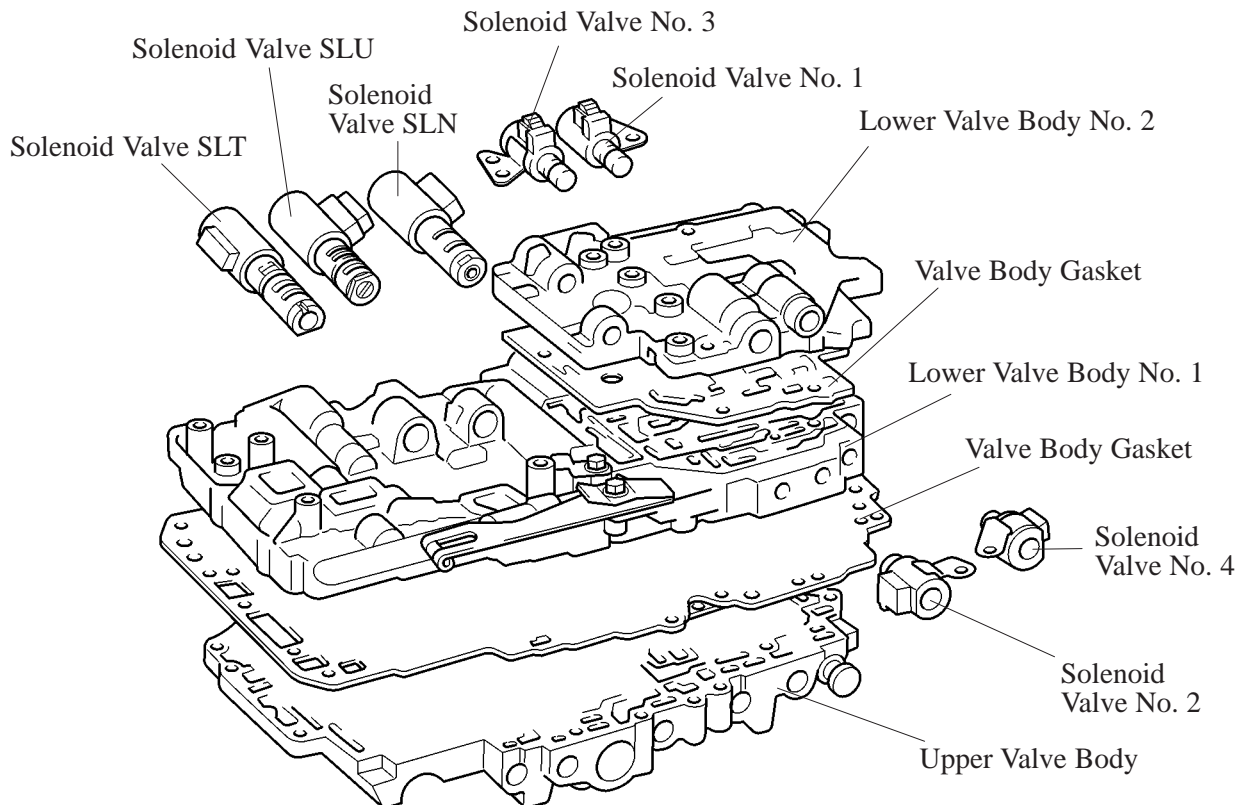


189CH05

CH

### 2. Valve Body

The valve body has a two-stage construction. All the solenoid valves are installed in the lower valve body.



189CH06