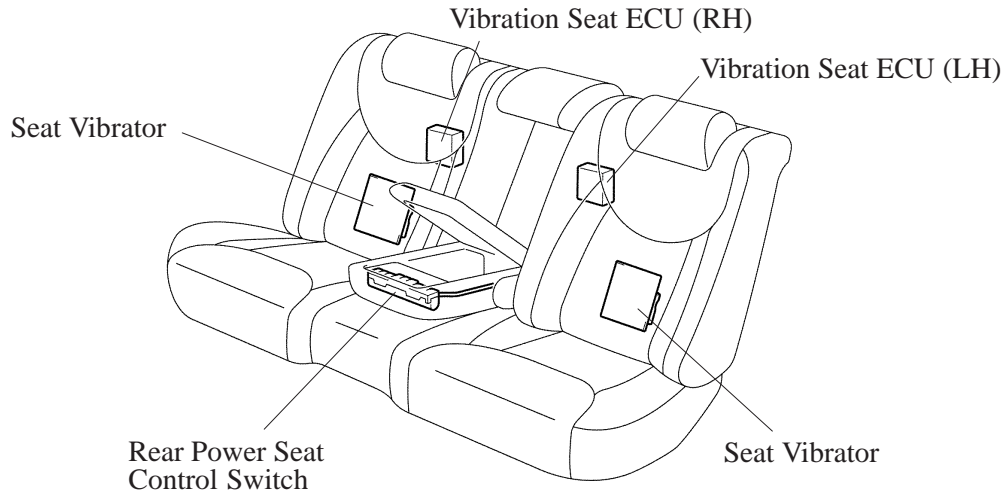


## SEAT VIBRATOR SYSTEM

### 1. General

The seat vibration system for the rear outer seats has been made available as an option for the comfort of the occupants.

### 2. Layout of Component



189BE207

### 3. System Operation

#### Activation Starting Conditions

The ignition switch is turned ON and the START side of the vibrator switch is turned ON.

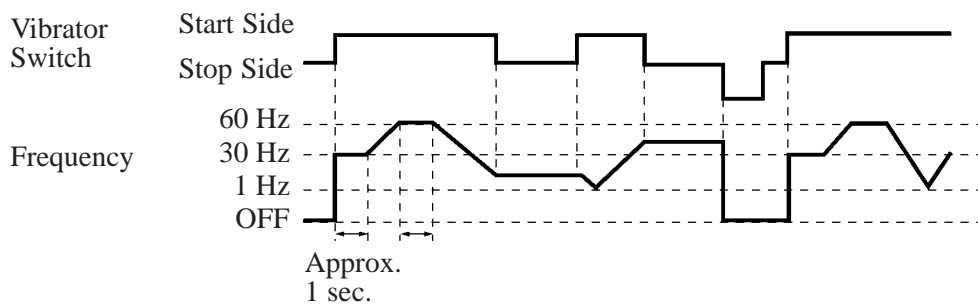
#### Activation Stopping Conditions

The activation stops if one of the two conditions listed below takes effect:

- The ignition switch is OFF.
- The STOP side of the vibrator switch is ON.

#### Operation

With the ignition switch ON, turning the START side of the vibrator switch ON causes the vibrator to vibrate at approximately 30 Hz. By keeping the START side of the vibrator switch pressed ON, the vibration increases up to 60 Hz. Thereafter, the vibration drops down to 1 Hz and increases again (the sweep time is approximately 10 seconds).



189BE164